

# Refrigerated Sandwich / Salad Unit - Two Door



## Models

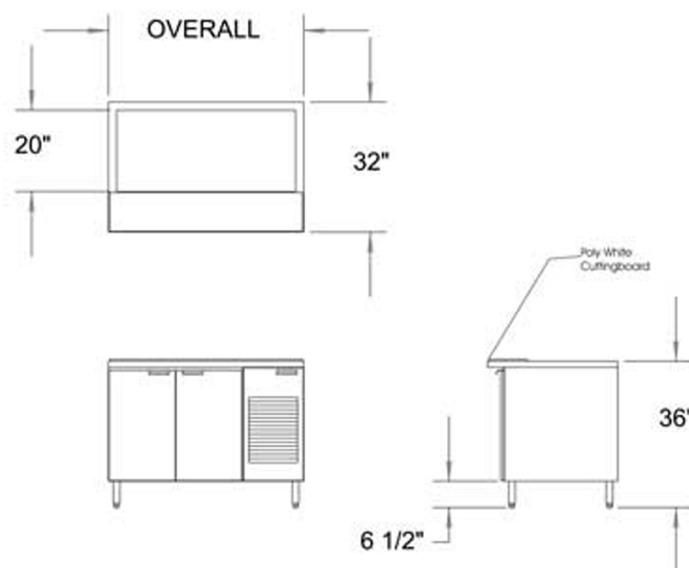
- RSU-48
- RSU-60

## Options

- Stainless steel body
- Evaporator pan
- Set of four casters 5" dia.
- Stainless steel insert pans

## Specifications

- Manufactured either self contained or remote
- Come either with a 12" opening on top or 20" opening
- Base cabinet comes standard with enameled steel finish on back & sides
- Standard stainless steel interior
- Standard stainless steel top & front
- Standard stainless steel night covers



## Model

## Doors

## Dimensions

RSU-48  
RSU-60

2  
2

48" x 32" x 36"  
60" x 32" x 36"